

**Legend**

- East Anglia TWO Windfarm Site
- East Anglia TWO Offshore Cable Corridor

**Sprat Spawning Grounds**

**Eggs (n/m<sup>2</sup>) - ICES 2018**

- 1 - 10
- 11 - 100
- 101 - 1,000
- 1,001 - 10,000
- 10,001 +

**Larvae (n/m<sup>2</sup>) - ICES 2018**

- 1 - 10
- 11 - 100
- 101 - 1,000
- 1,001 - 10,000
- 10,001 +

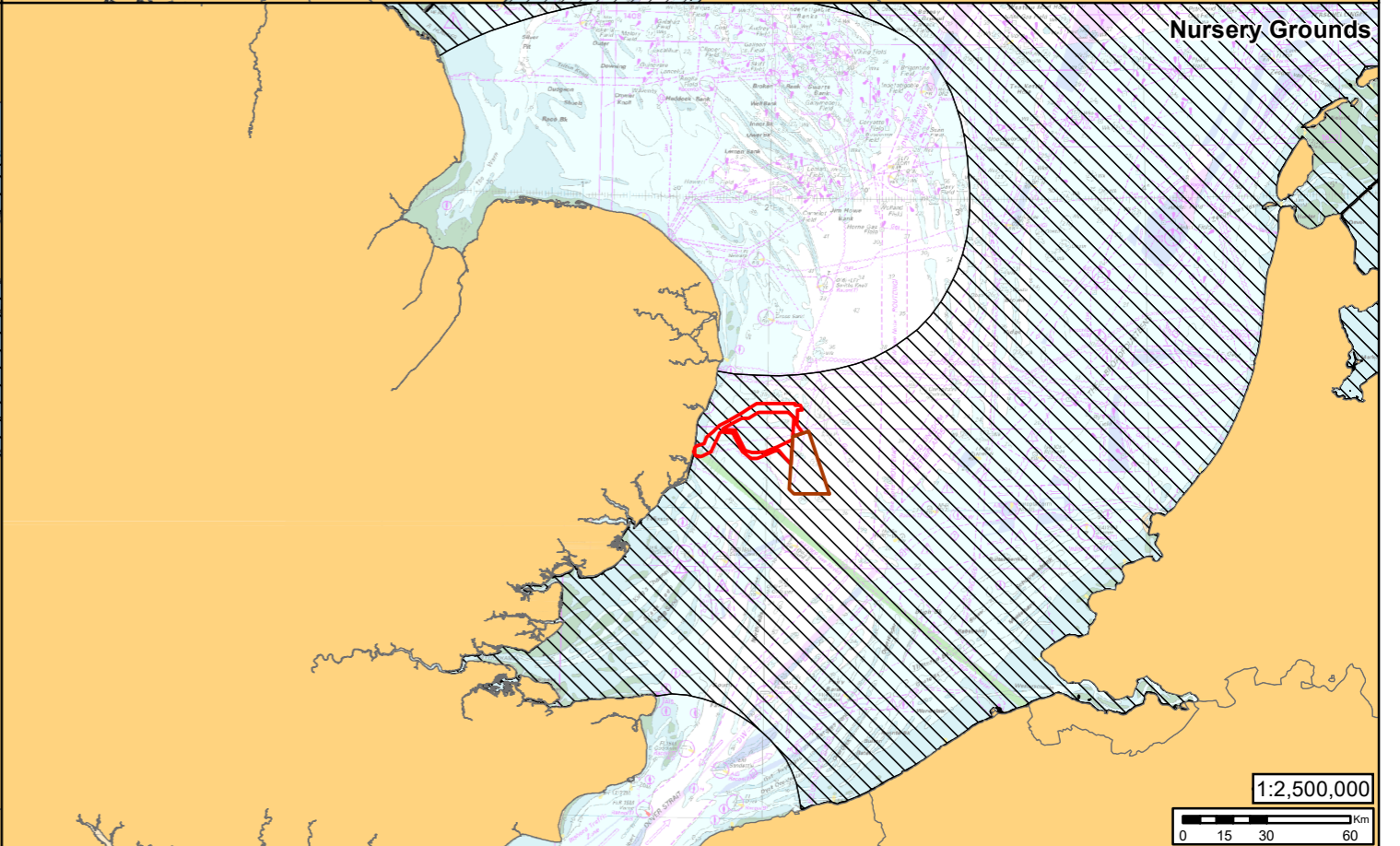
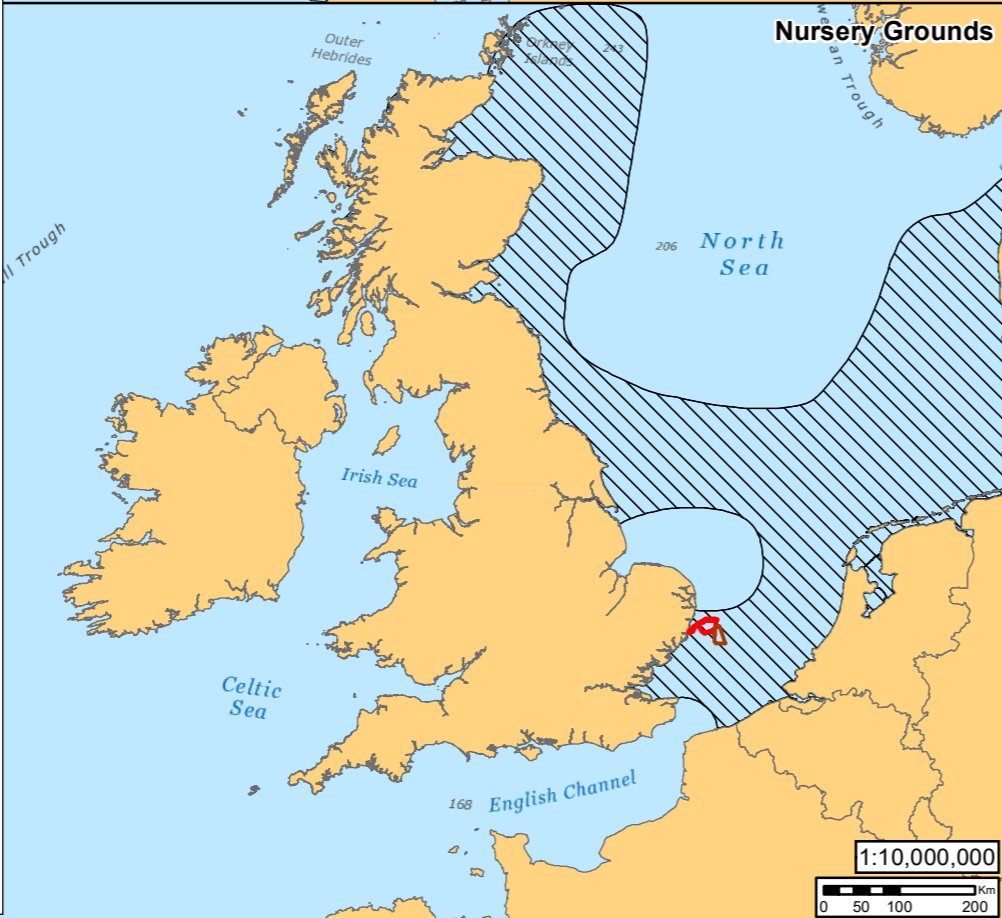
**Coull et al. 1998**

- Sprat

**Sprat Nursery Grounds**

**Coull et al. 1998**

- Sprat



2	24/06/2019	FC	Second Issue.	Prepared:	FC
1	20/05/2019	FC	First Issue.	Checked:	KC
Rev	Date	By	Comment	Approved:	PP

Scale @ A3

Source: © Cefas, 2018. © ICES International Herring Larvae Survey, 2018. Contains OS data © Crown copyright and database right, 2019. © British Crown and OceanWise, 2019. All rights reserved. Licence No. EMS-EK001-648150. Not to be used for navigation. Service Layer Credits: Sources: Esri, GEBCO, NOAA, National Geographic, Garmin, HERE, Geonames.org, and other contributors.

This map has been produced to the latest known information at the time of issue, and has been produced for your information only. Please consult with the SPR Offshore GIS team to ensure the content is still current before using the information contained on this map. To the fullest extent permitted by law, we accept no responsibility or liability (whether in contract, tort (including negligence) or otherwise in respect of any errors or omissions in the information contained in the map and shall not be liable for any loss, damage or expense caused by such errors or omissions.

**East Anglia TWO**

Sprat Spawning and Nursery Grounds  
(Coull et al., 1998)

<b>Drg No</b>	EA2-DEV-DRG-IBR-000634	
<b>Rev</b>	2	Datum: WGS 1984
<b>Date</b>	24/06/19	Projection: Zone 31N
<b>Figure</b>	10.21	